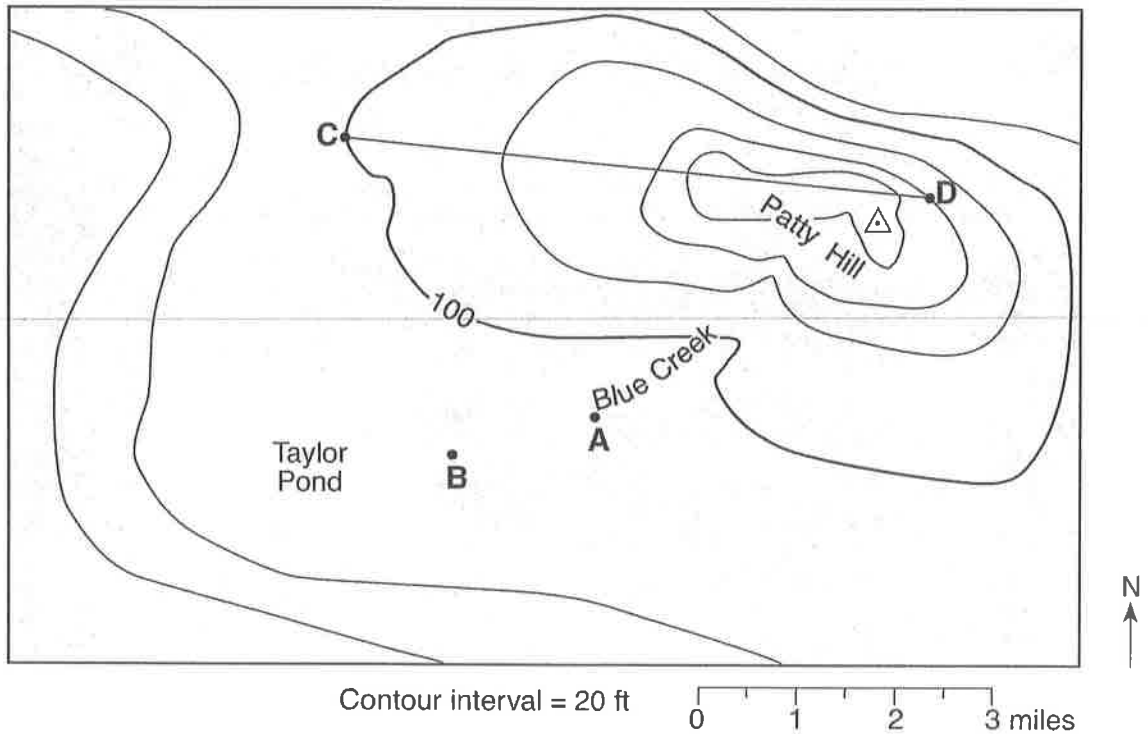
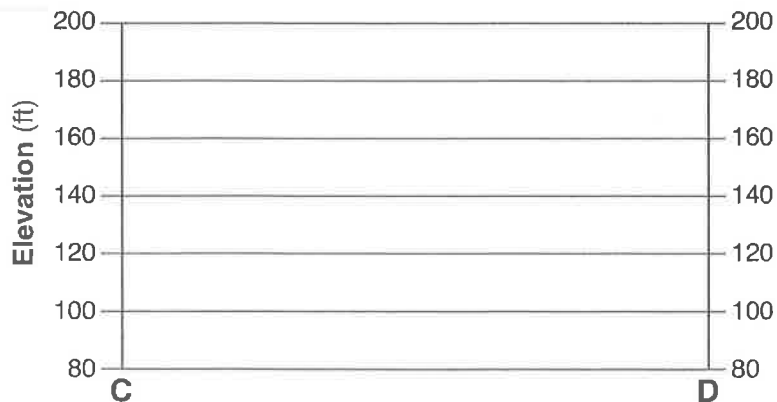


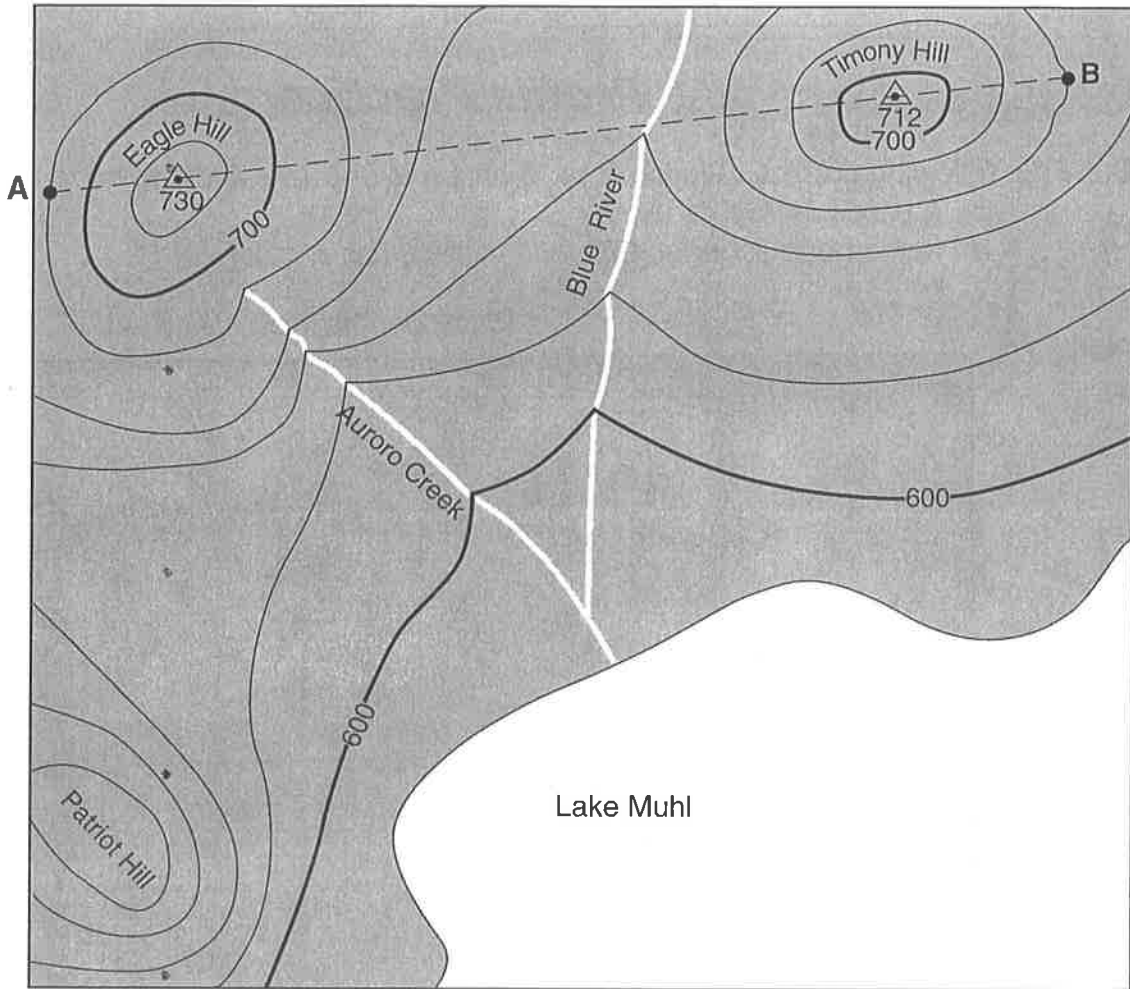
59 Profile Practice

1. Complete the profiles below.
2. Download and print the file **59 - Answer Key**. Hold it up to a strong light and overlay the key and the profile you drew. The center of each **X** you drew should fall within the circle for each **X** on the answer key.
3. **Important:** Your hills and valleys must be rounded.
4. Watch video **59 - Profile Practice** on the Gazdonian Productions YouTube Channel to see a step by step tutorial showing how to properly draw these profiles.



On the grid *SHOWN BELOW*, construct a profile of the land surface along line CD. Plot the elevation of *each* contour line that crosses line CD. Connect the plots with a line to complete the profile. [1]





Contour interval = 20 feet

