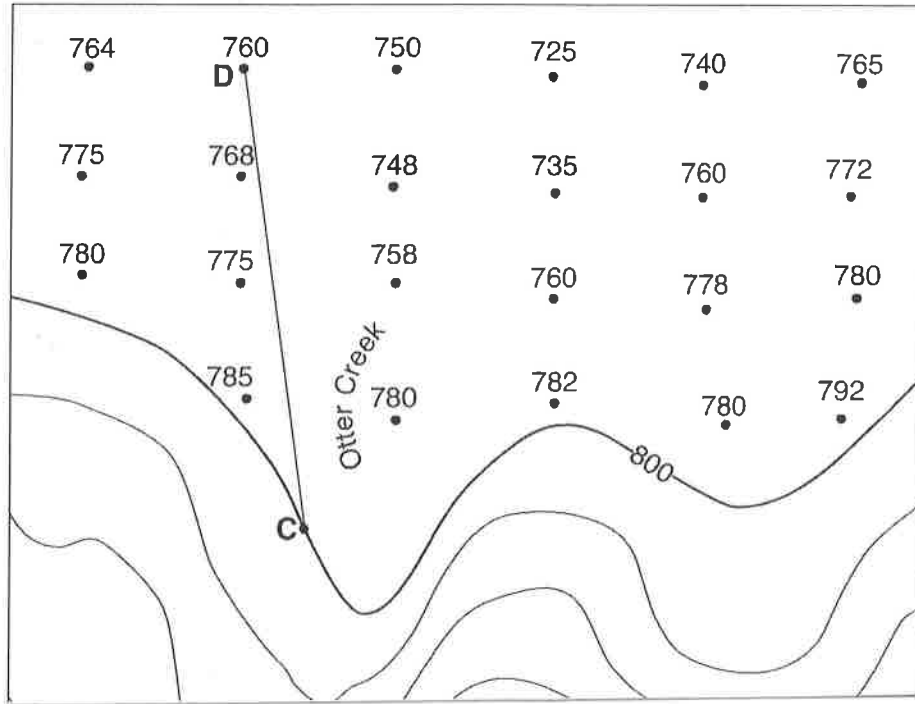


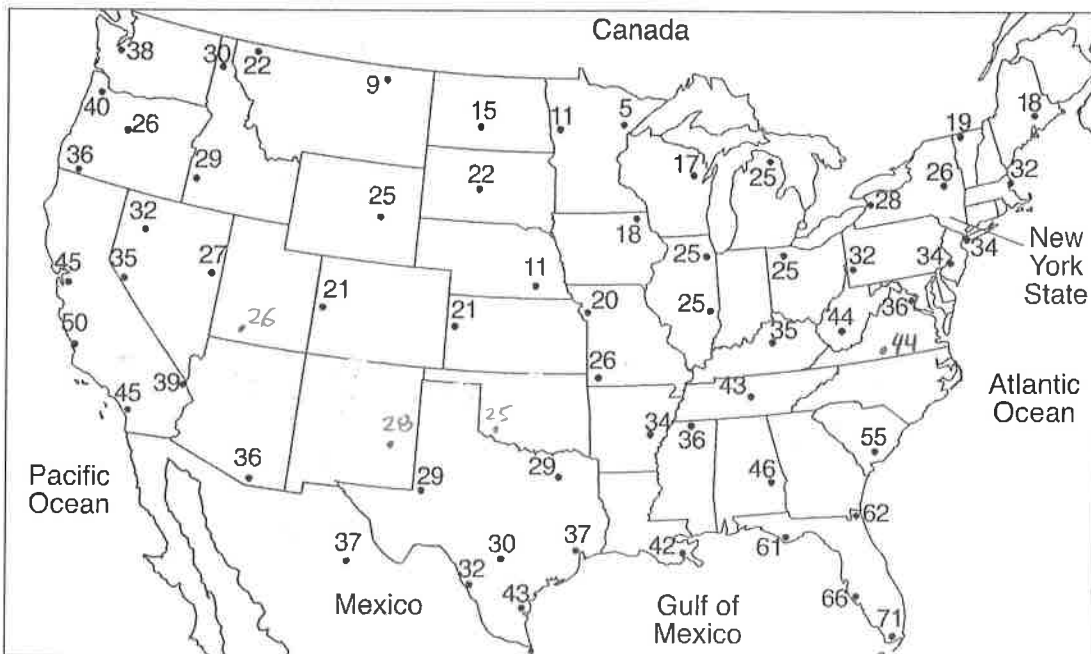
Drawing isolines

1. Using a pencil, draw in the following isolines on the field map below: 740 ft, 750ft, 760ft, 770ft



2. Using a pencil, please draw in the following isolines on the field map below: 20°F, 30°F, 40°F. Extend each line to the edge of the continent.

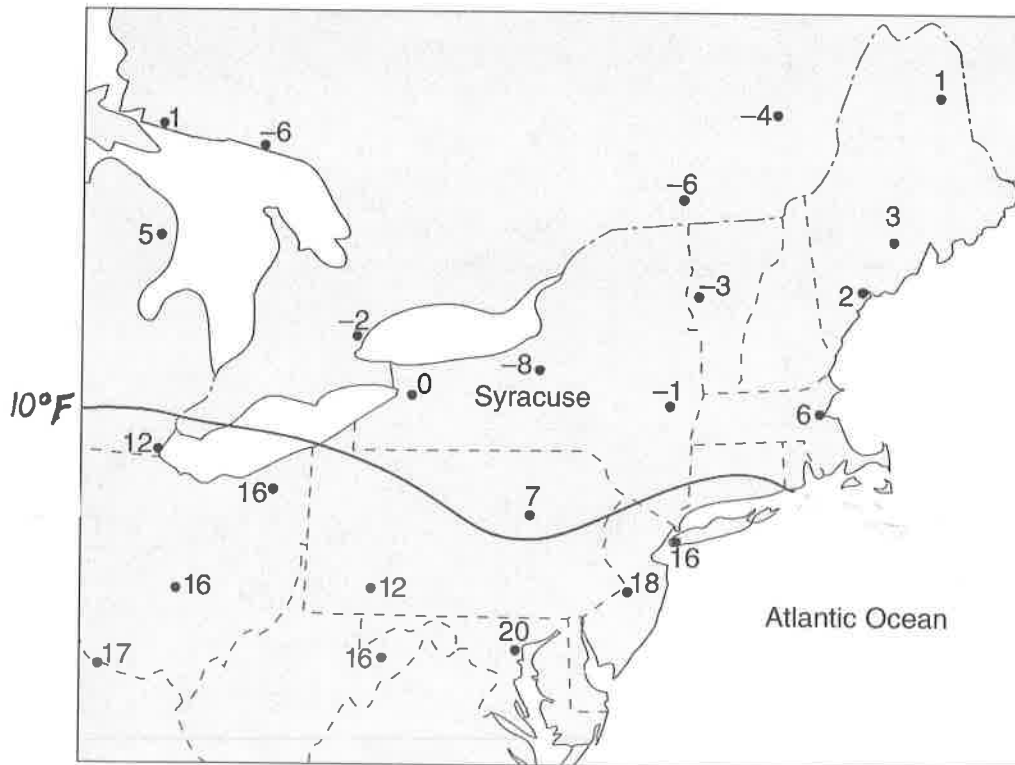
Map 1—Temperatures (°F)



3. Using a pencil, draw in the isolines for the following air temperatures: 35°F, 45°F, 55°F, 65°F. Extend each line to the edge of the continent.



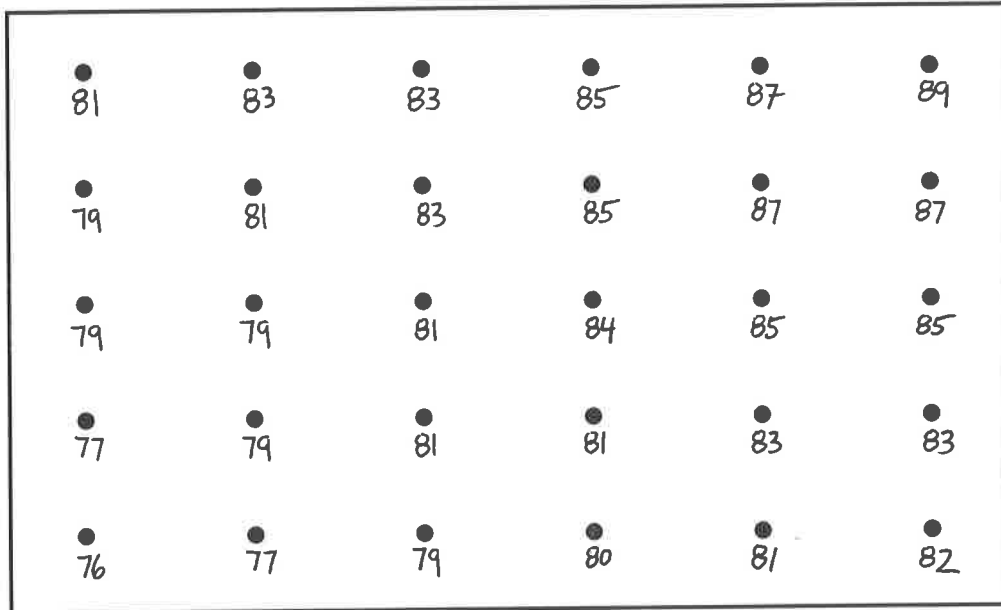
4. Using a pencil, draw in the isolines for the following air temperatures: -5°F, 0°F, 5°F, 15°F. Extend each line to the edge of the continent.



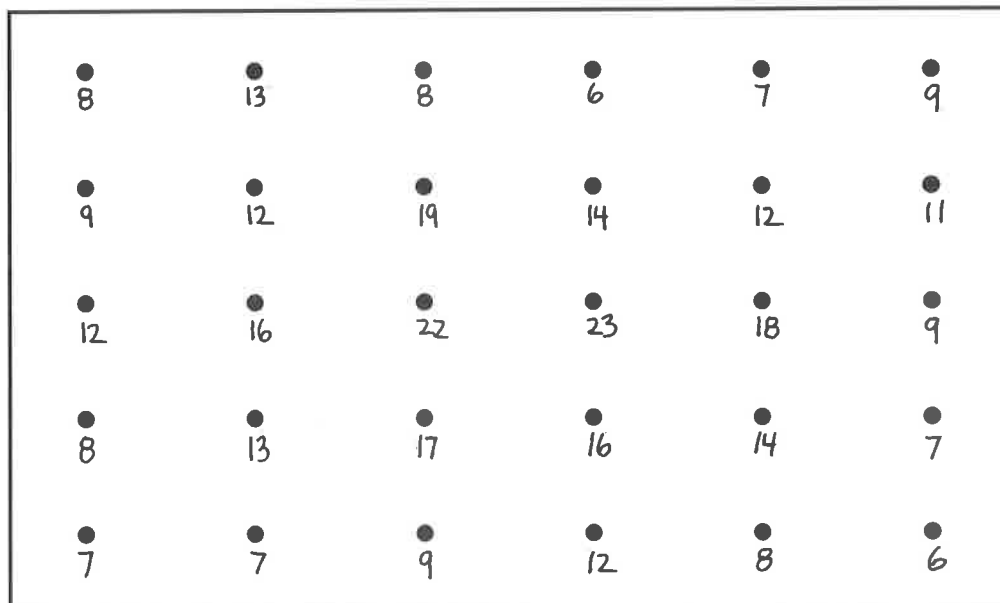
Drawing Isolines

Use **PENCIL** for these. Trust me on this one...

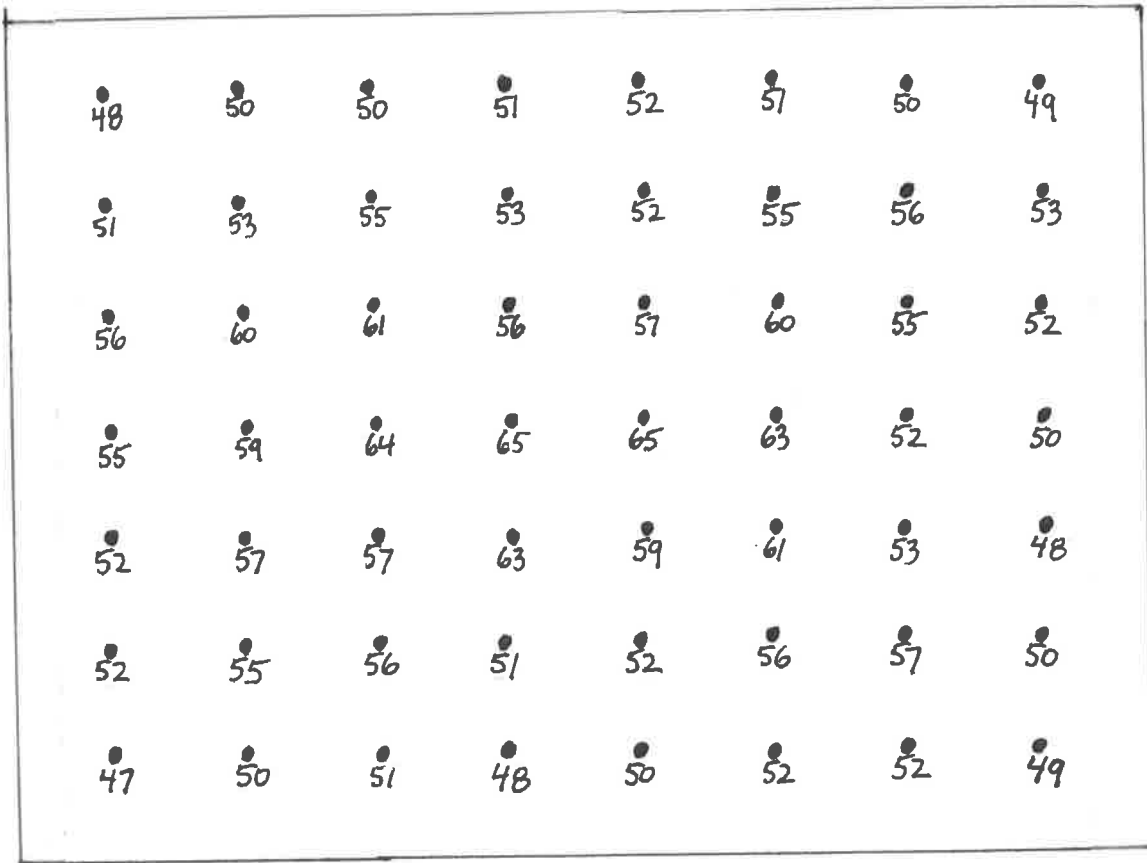
1. Draw these isolines: 78, 80, 82, 84, 86 and 88



2. Draw these isolines: 10, 15 and 20



3. Draw the following isolines: 54, 58, 62



4. Draw the 28, 30, 32, 34, 36 and 38 isolines please

